



by **AKEMIUCHI**

ENGRAVE

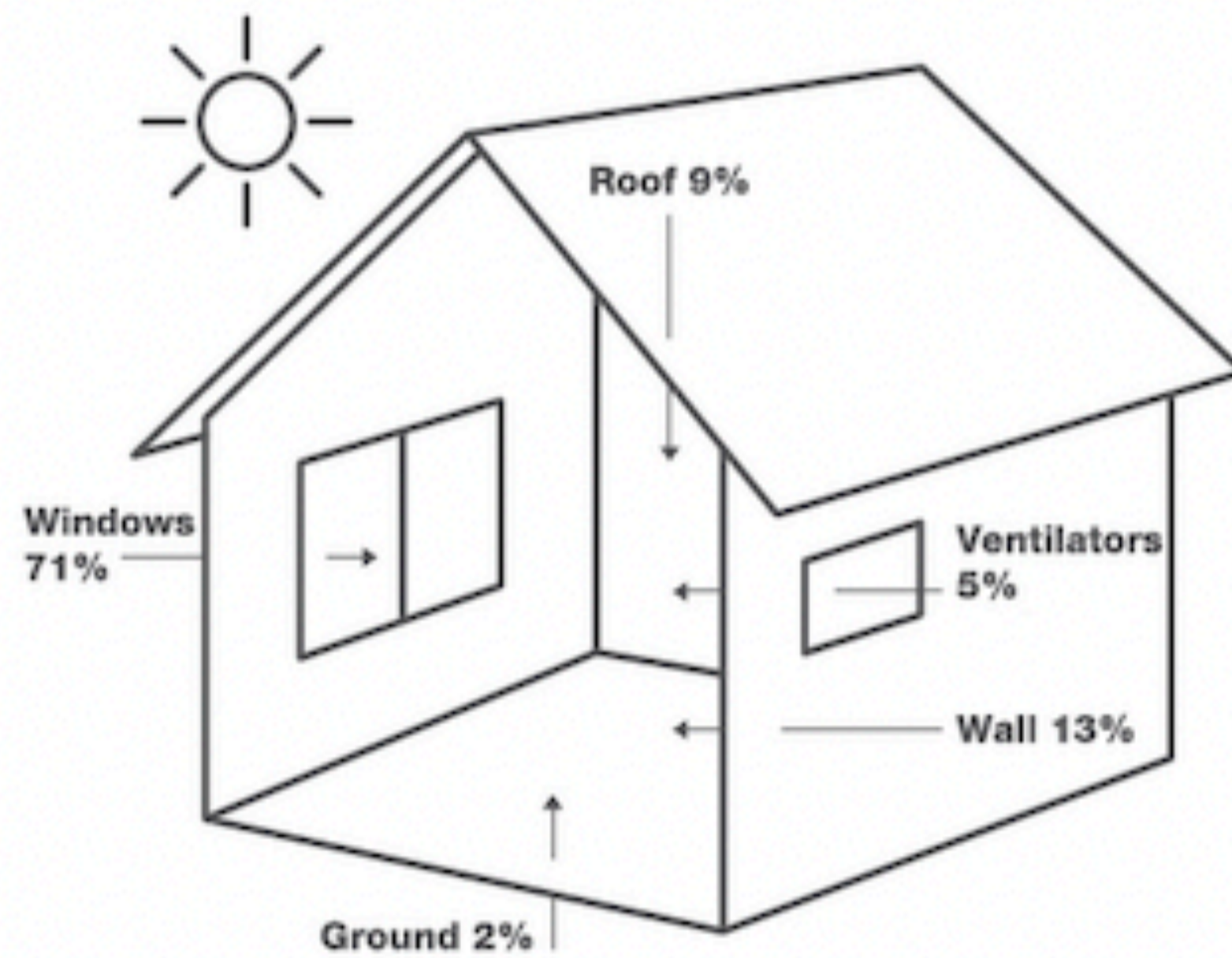
ENGRAVE

**ENERGY
SAVER**

A home-friendly solution for energy efficiency

Warm climates and rapid urbanisation have caused tremendous increase in energy consumption especially for air-conditioning amongst homes. Therefore, inclining into energy efficient solutions for homes can make a huge difference. In many cases, simply changing a curtain can save up energy consumption.

Discover the Engrave Energy Saver curtains that block out the sun from entering your home, so you may enjoy a cooler environment, better energy efficiency and total home privacy.



Where does heat in your home enter from?

As homes are exposed to sunlight, heat can be transferred in through many ways. Prominently, windows contribute the biggest part to heat accumulation in conventional homes.

With the Engrave Energy Saver curtains in place, heat transferred into homes can be significantly reduced which helps to save on energy consumption as the indoors are kept cooler.



Tips

Keep curtains closed before the heat of the day to reduce any chance of sunlight warming the air. This keeps the room temperature comfortable and lessens the need for air-conditioning.

At a Glance	Efficiently blocks all ambient light from the outside	Harmonious dual tone woven fabric provides a versatile and urban comfort	Good thermal insulation to keep room temperatures comfortable	Reduces energy consumption cost
--------------------	---	--	---	---------------------------------

ATTRIBUTES



Energy Efficient



Thermal Insulation



Dim Out



Machine Washable



Fire Resistant

CODE GUIDE
DIM OUT



AKEMIUCHI

ENGRAVE

Width	320 cm
Composition	100% Polyester
Weight (GSM)	290
Colour & Design	4D6C

TECHNICAL SPECIFICATIONS

PROPERTY	TEST METHOD	RESULT
Abrasion Resistances	ASTM D4966	20,000

FASTNESS OF DYE

Light	AATCC 16	4.5
Rubbing	AATCC 8	4.5

FR STANDARDS

NFPA 701	Pass
NFPA 260 - Class 1	Pass
EN 1102	Pass
16 CFR 1610	Pass



CARE INSTRUCTIONS



OEKO-TEX®
CONFIDENCE IN TEXTILES
STANDARD 100 
SHWO 097067 TESTEX
Tested for harmful substances.
www.oeko-tex.com/standard100

Engrave FLUTTER 001 SILVER MOON

- Composition: 100% polyester
- Width: 320cm
- Weight: 290gsm
- Abrasion Resistances: 20,000 cycles
- Colour fastness to light passes AATCC 16
- Colour shades may slightly vary from cye-lot to dye-lot



CODE GUIDE DIM OUT

FR STANDARDS
Passed the following test:
NFPA 701
NFPA 260 - Class 1
EN 1102
16 CFR 1610



Engrave FLUTTER 002 PURBECK MARBLE

- Composition: 100% polyester
- Width: 320cm
- Weight: 290gsm
- Abrasion Resistances: 20,000 cycles
- Colour fastness to light passes AATCC 16
- Colour shades may slightly vary from dye-lot to dye-lot

**CODE GUIDE
DIM OUT**

FR STANDARDS
Passed the following test:
NFPA 701
NFPA 260 - Class 1
EN 1102
16 CFR 1610





Engrave FLUTTER 003 PAVILION GREY

- Composition: 100% polyester
- Width: 320cm
- Weight: 290gsm
- Abrasion Resistances: 20,000 cycles
- Colour fastness to light passes AATCC 16
- Colour shades may slightly vary from dye-lot to dye-lot

CODE GUIDE
DIM OUT

FR STANDARDS
Passed the following test:
NFPA 701
NFPA 260 - Class 1
EN 1102
16 CFR 1610





Engrave FLUTTER 004 OLIVE GROVE

- Composition: 100% polyester
- Width: 320cm
- Weight: 290gsm
- Abrasion Resistances: 20,000 cycles
- Colour fastness to light passes AATCC 16
- Colour shades may slightly vary from eye-lot to dye-lot



CODE GUIDE
DIM OUT

FR STANDARDS
Passed the following test:
NFPA 701
NFPA 260 - Class 1
EN 1102
16 CFR 1610



Engrave FLUTTER 005 UMBER GREY

- Composition: 100% polyester
- Width: 320cm
- Weight: 290gsm
- Abrasion Resistances: 20,000 cycles
- Colour fastness to light passes AATCC 16
- Colour shades may slightly vary from dye-lot to dye-lot

CODE GUIDE
DIM OUT

FR STANDARDS
Passed the following test:
NFPA 701
NFPA 260 - Class 1
EN 1102
16 CFR 1610





Engrave FLUTTER 006 COAL FIELD

- Composition: 100% polyester
- Width: 320cm
- Weight: 290gsm
- Abrasion Resistances: 20,000 cycles
- Colour fastness to light passes AATCC 16
- Colour shades may slightly vary from eye-lot to dye-lot



CODE GUIDE
DIM OUT

FR STANDARDS
Passed the following test:
NFPA 701
NFPA 260 - Class 1
EN 1102
16 CFR 1610



Engrave GROWTH 001 PURBECK MARBLE

- Composition: 100% polyester
- Width: 320cm
- Weight: 290gsm
- Abrasion Resistances: 20,000 cycles
- Colour fastness to light passes AATCC 16
- Colour shades may slightly vary from eye-lot to dye-lot

**CODE GUIDE
DIM OUT**

FR STANDARDS
Passed the following test:
NFPA 701
NFPA 260 - Class 1
EN 1102
16 CFR 1610





Engrave GROWTH 002 COAL FIELD

- Composition: 100% polyester
- Width: 320cm
- Weight: 290gsm
- Abrasion Resistances: 20,000 cycles
- Colour fastness to light passes AATCC 16
- Colour shades may slightly vary from dye-lot to dye-lot



CODE GUIDE
DIM OUT

ER STANDARDS
Passed the following test:
NFPA 701
NFPA 260 - Class 1
EN 1102
16 CFR 1610



Engrave GROWTH 003 COOPER CRUSH

- Composition: 100% polyester
- Width: 320cm
- Weight: 290gsm
- Abrasion Resistances: 20,000 cycles
- Colour fastness to light passes AATCC 16
- Colour shades may slightly vary from dye-lot to dye-lot

**CODE GUIDE
DIM OUT**

FR STANDARDS
Passed the following test:
NFPA 701
NFPA 260 - Class 1
EN 1102
16 CFR 1610





Engrave GROWTH 004 SUNSET KISS

- Composition: 100% polyester
- Width: 320cm
- Weight: 290gsm
- Abrasion Resistances: 20,000 cycles
- Colour fastness to light passes AATCC 16
- Colour shades may slightly vary from cye-lot to dye-lot



**CODE GUIDE
DIM OUT**

FR STANDARDS
Passed the following test:
NFPA 701
NFPA 260 - Class 1
EN 1102
16 CFR 1610



Engrave GROWTH 005 MOSS GREEN

- Composition: 100% polyester
- Width: 320cm
- Weight: 290gsm
- Abrasion Resistances: 20,000 cycles
- Colour fastness to light passes AATCC 16
- Colour shades may slightly vary from dye-lot to dye-lot

**CODE GUIDE
DIM OUT**

FR STANDARDS
Passed the following test:
NFPA 701
NFPA 260 - Class 1
EN 1102
16 CFR 1610



Engrave GROWTH 006 TIARA TURQUOISE

- Composition: 100% polyester
- Width: 320cm
- Weight: 290gsm
- Abrasion Resistances: 20,000 cycles
- Colour fastness to light passes AATCC 16
- Colour shades may slightly vary from dye-lot to dye-lot



**CODE GUIDE
DIM OUT**

FR STANDARDS
Passed the following test:
NFPA 701
NFPA 260 - Class 1
EN 1102
16 CFR 1610



Engrave TRAIL 001 WILD MUSHROOM

- Composition: 100% polyester
- Width: 320cm
- Weight: 290gsm
- Abrasion Resistances: 20,000 cycles
- Colour fastness to light passes AATCC 16
- Colour shades may slightly vary from dye-lot to dye-lot



**CODE GUIDE
DIM OUT**

FR STANDARDS
Passed the following test:
NFPA 701
NFPA 260 - Class 1
EN 1102
16 CFR 1610



Engrave TRAIL 002 TALAVERA

- Composition: 100% polyester
- Width: 320cm
- Weight: 290gsm
- Abrasion Resistances: 20,000 cycles
- Colour fastness to light passes AATCC 16
- Colour shades may slightly vary from dye-lot to dye-lot

**CODE GUIDE
DIM OUT**

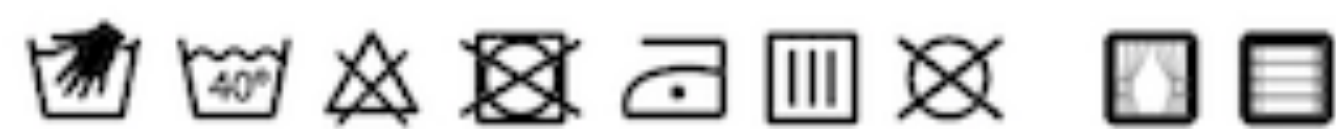
FR STANDARDS
Passed the following test:
NFPA 701
NFPA 260 - Class 1
EN 1102
16 CFR 1610





Engrave TRAIL 003 OLIVE GROVE

- Composition: 100% polyester
- Width: 320cm
- Weight: 290gsm
- Abrasion Resistances: 20,000 cycles
- Colour fastness to light passes AATCC 16
- Colour shades may slightly vary from dye-lot to dye-lot



**CODE GUIDE
DIM OUT**

ER STANDARDS
Passed the following test:
NFPA 701
NFPA 260 - Class 1
EN 1102
16 CFR 1610



Engrave TRAIL 004 SILVER MOON

- Composition: 100% polyester
- Width: 320cm
- Weight: 290gsm
- Abrasion Resistances: 20,000 cycles
- Colour fastness to light passes AATCC 16
- Colour shades may slightly vary from eye-lot to dye-lot

**CODE GUIDE
DIM OUT**

FR STANDARDS
Passed the following test:
NFPA 701
NFPA 260 - Class 1
EN 1102
16 CFR 1610





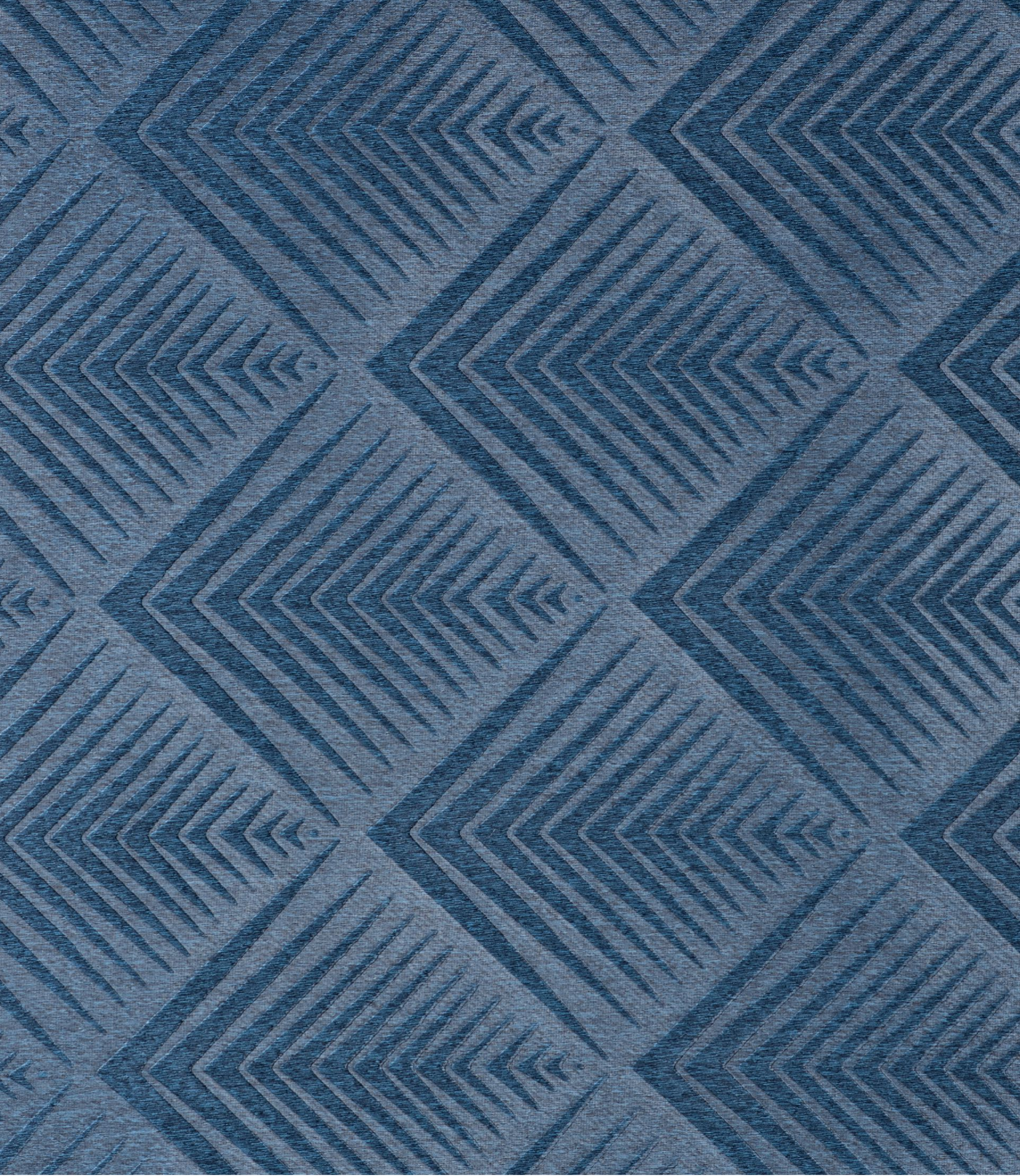
Engrave TRAIL 005 COAL FIELD

- Composition: 100% polyester
- Width: 320cm
- Weight: 290gsm
- Abrasion Resistances: 20,000 cycles
- Colour fastness to light passes AATCC 16
- Colour shades may slightly vary from dye-lot to dye-lot

**CODE GUIDE
DIM OUT**

ER STANDARDS
Passed the following test:
NFPA 701
NFPA 260 - Class 1
EN 1102
16 CFR 1610





Engrave TRAIL 006 OCEAN DEEP

- Composition: 100% polyester
- Width: 320cm
- Weight: 290gsm
- Abrasion Resistances: 20,000 cycles
- Colour fastness to light passes AATCC 16
- Colour shades may slightly vary from dye-lot to dye-lot

**CODE GUIDE
DIM OUT**

ER STANDARDS
Passed the following test:
NFPA 701
NFPA 260 - Class 1
EN 1102
16 CFR 1610



Engrave WASH 001 TERRACE WHITE

- Composition: 100% polyester
- Width: 320cm
- Weight: 290gsm
- Abrasion Resistances: 20,000 cycles
- Colour fastness to light passes AATCC 16
- Colour shades may slightly vary from cye-lot to dye-lot



CODE GUIDE DIM OUT

FR STANDARDS
Passed the following test:
NFPA 701
NFPA 260 - Class 1
EN 1102
16 CFR 1610

Engrave WASH 002 OLIVE GROVE

- Composition: 100% polyester
- Width: 320cm
- Weight: 290gsm
- Abrasion Resistances: 20,000 cycles
- Colour fastness to light passes AATCC 16
- Colour shades may slightly vary from dye-lot to dye-lot



CODE GUIDE DIM OUT

FR STANDARDS
Passed the following test:
NFPA 701
NFPA 260 - Class 1
EN 1102
16 CFR 1610



Engrave WASH 003 FLINT STONE

- Composition: 100% polyester
- Width: 320cm
- Weight: 290gsm
- Abrasion Resistances: 20,000 cycles
- Colour fastness to light passes AATCC 16
- Colour shades may slightly vary from cye-lot to dye-lot

CODE GUIDE
DIM OUT

FR STANDARDS
Passed the following test:
NFPA 701
NFPA 260 - Class 1
EN 1102
16 CFR 1610





Engrave WASH 004 DENIM BLUE

- Composition: 100% polyester
- Width: 320cm
- Weight: 290gsm
- Abrasion Resistances: 20,000 cycles
- Colour fastness to light passes AATCC 16
- Colour shades may slightly vary from cye-lot to dye-lot



**CODE GUIDE
DIM OUT**

FR STANDARDS
Passed the following test:
NFPA 701
NFPA 260 - Class 1
EN 1102
16 CFR 1610



Engrave WASH 005 RUGGED BLUE

- Composition: 100% polyester
- Width: 320cm
- Weight: 290gsm
- Abrasion Resistances: 20,000 cycles
- Colour fastness to light passes AATCC 16
- Colour shades may slightly vary from dye-lot to dye-lot

CODE GUIDE
DIM OUT

FR STANDARDS
Passed the following test:
NFPA 701
NFPA 260 - Class 1
EN 1102
16 CFR 1610





Engrave WASH 006 DEW BERRY

- Composition: 100% polyester
- Width: 320cm
- Weight: 290gsm
- Abrasion Resistances: 20,000 cycles
- Colour fastness to light passes AATCC 16
- Colour shades may slightly vary from dye-lot to dye-lot



CODE GUIDE DIM OUT

FR STANDARDS
Passed the following test:
NFPA 701
NFPA 260 - Class 1
EN 1102
16 CFR 1610