



by AKEMIUCHI

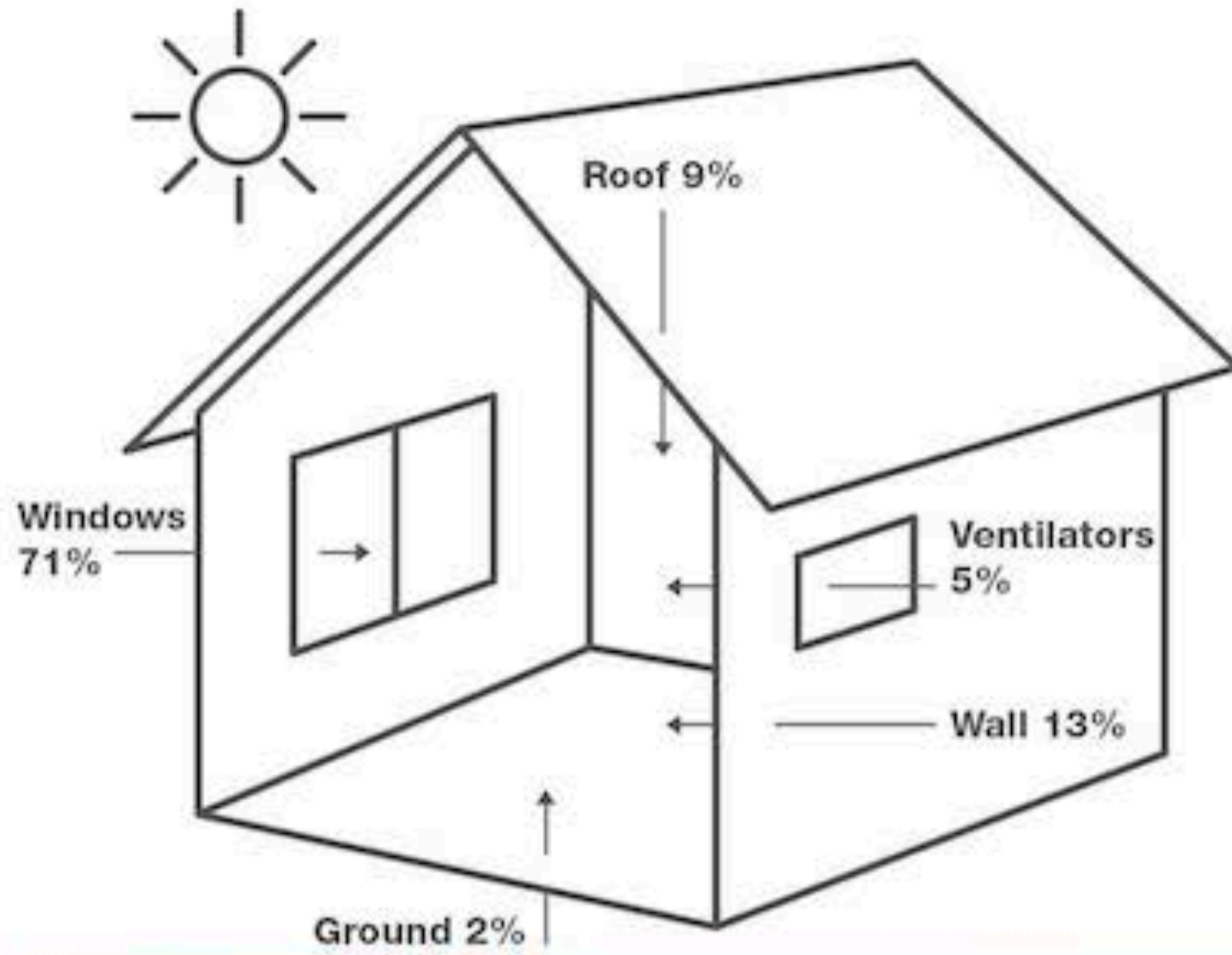
# HALLWAY NOISE REDUCTION



## The ideal home addition for sound and light reduction

Excessive sound and light can often create distractions especially during work or sleep. Having ordinary, conventional curtains might be good at blocking ambient light but lacks effectiveness when it comes to sound. To embellish homes with thorough serenity, it is now easier with Hallway Noise Reduction Curtain.

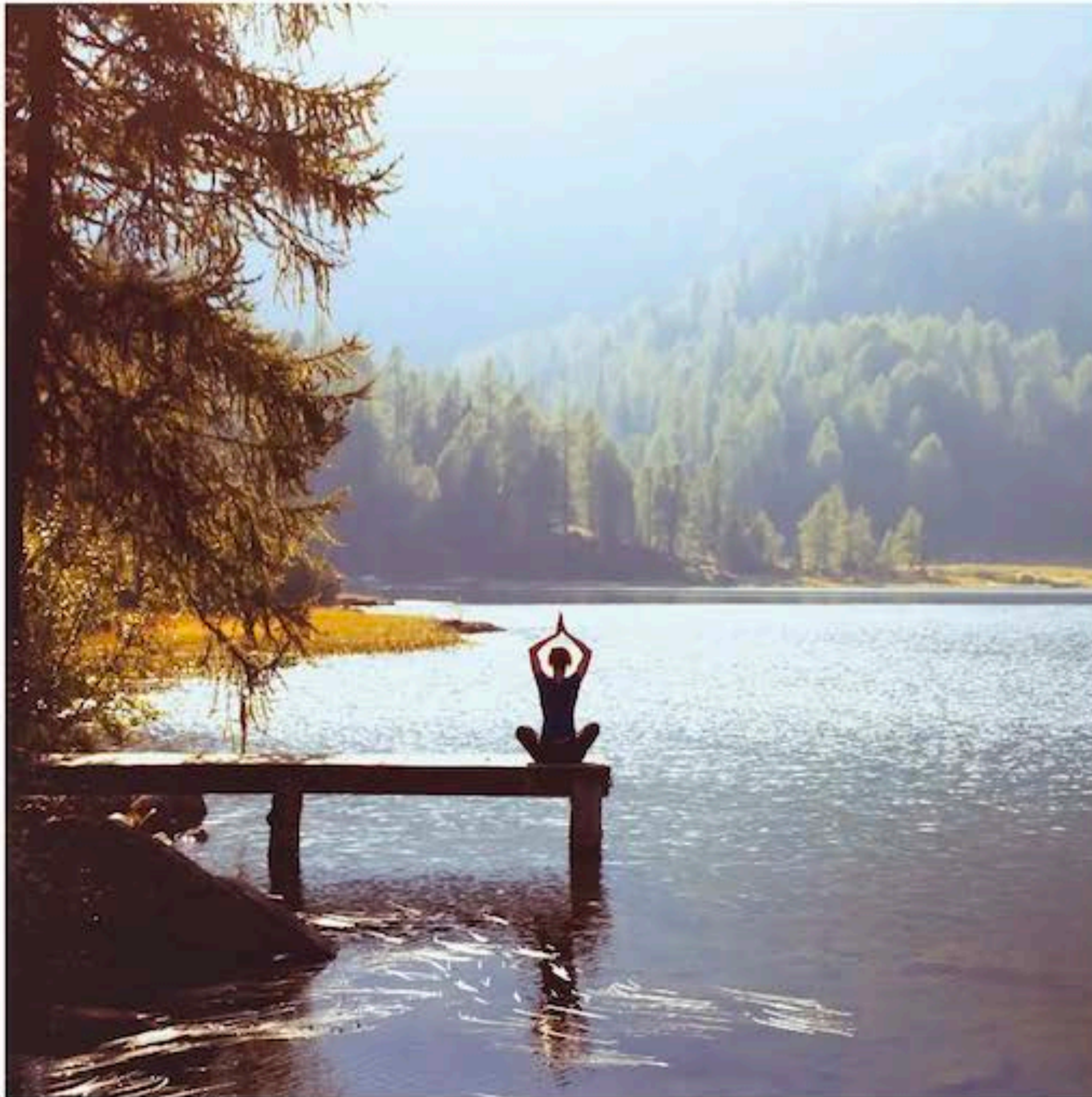
The curtain is specially designed with a thick and unique fabrication that dampens sound to create the calmness you desire. Furthermore, it effectively blocks out all ambient light from the outside which lowers temperatures indoors and help you save on energy consumption.



### Where does sound and heat in your home enter from?

Homes especially in urban areas are commonly prone to excessive noise and heat. They can penetrate into home spaces through many ways but prominently, windows contribute to the biggest part.

With the Hallway Noise Reduction curtains in place, noise and heat penetration into homes can be significantly reduce which helps to save on energy consumption and create a serene ambience.

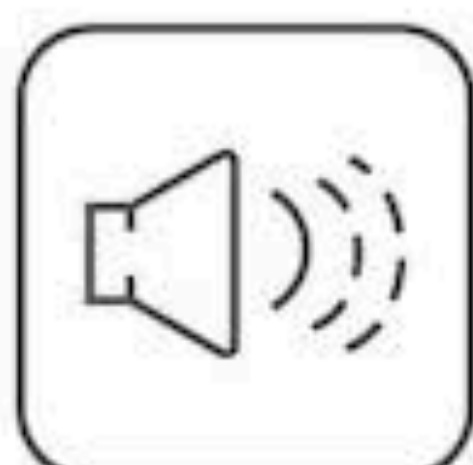


### Tips

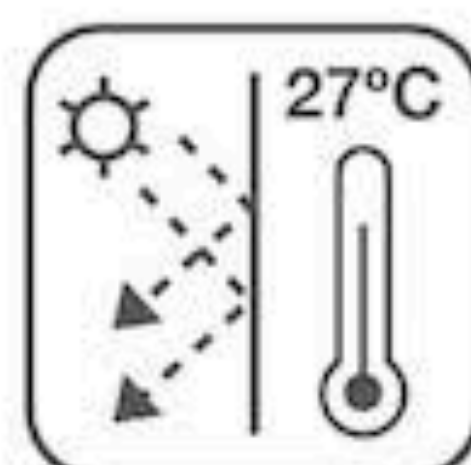
To maximise noise reduction, ensure the curtain covers from ceiling to floor, and pass the slides of the window by at least a few centimetres.

<p><b>At a Glance</b></p>	<p>Dampens sound significantly. Reduce energy consumption cost by up to 30%</p>	<p>Retains good functionality regardless of where it is used</p>	<p>Effectively blocks all ambient light from the outside</p>	<p>Good thermal insulation to keep room temperatures comfortable</p>
---------------------------	---	--	--	--

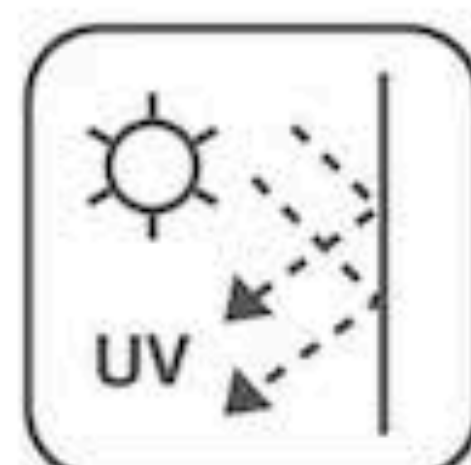
## ATTRIBUTES



Noise Reduction



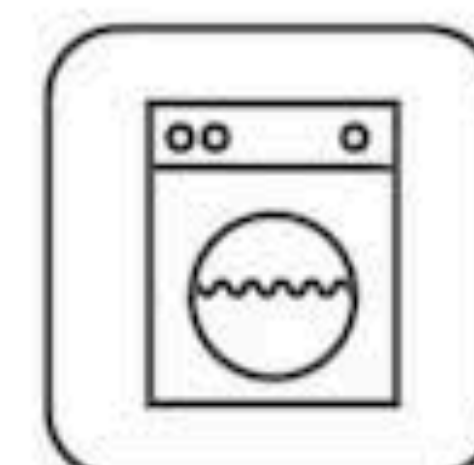
Thermal Insulation



UV Protection



Sun Out



Machine Washable









### Hallway GREG 001 IRON

- Composition: 100% polyester
- Width: 320cm
- Martindale: 20,000 rubs
- Colour fastness to light passes AATCC 16
- Colour shades may slightly vary from dye-lot to dye-lot

**CODE GUIDE  
SUN OUT**







### Hallway GREG 002 PLATINUM

- Composition: 100% polyester
- Width: 320cm
- Martindale: 20,000 rubs
- Colour fastness to light passes AATCC 16
- Colour shades may slightly vary from dye-lot to dye-lot

**CODE GUIDE  
SUN OUT**







## Hallway GREG 003 BRASS

- Composition: 100% polyester
- Width: 320cm
- Martindale: 20,000 rubs
- Colour fastness to light passes AATCC 16
- Colour shades may slightly vary from dye-lot to dye-lot

CODE GUIDE  
SUN OUT







**Hallway GREG 004 TEAL**

- Composition: 100% polyester
- Width: 320cm
- Martindale: 20,000 rubs
- Colour fastness to light passes AATCC 16
- Colour shades may slightly vary from dye-lot to dye-lot

**CODE GUIDE  
SUN OUT**







### Hallway GREG 005 SILICON

- Composition: 100% polyester
- Width: 320cm
- Martindale: 20,000 rubs
- Colour fastness to light passes AATCC 16
- Colour shades may slightly vary from dye-lot to dye-lot

**CODE GUIDE  
SUN OUT**







### Hallway GREG 006 NICKEL

- Composition: 100% polyester
- Width: 320cm
- Martindale: 20,000 rubs
- Colour fastness to light passes AATCC 16
- Colour shades may slightly vary from dye-lot to dye-lot

**CODE GUIDE  
SUN OUT**







### Hallway GREG 007 GRAPHITE

- Composition: 100% polyester
- Width: 320cm
- Martindale: 20,000 rubs
- Colour fastness to light passes AATCC 16
- Colour shades may slightly vary from dye-lot to dye-lot

**CODE GUIDE  
SUN OUT**







### Hallway GREG 008 COPPER

- Composition: 100% polyester
- Width: 320cm
- Martindale: 20,000 rubs
- Colour fastness to light passes AATCC 16
- Colour shades may slightly vary from dye-lot to dye-lot

**CODE GUIDE  
SUN OUT**





## Hallway ISSAC 001 IRON

- Composition: 100% polyester
- Width: 320cm
- Martindale: 20,000 rubs
- Colour fastness to light passes AATCC 16
- Colour shades may slightly vary from dye-lot to dye-lot



CODE GUIDE  
SUN OUT

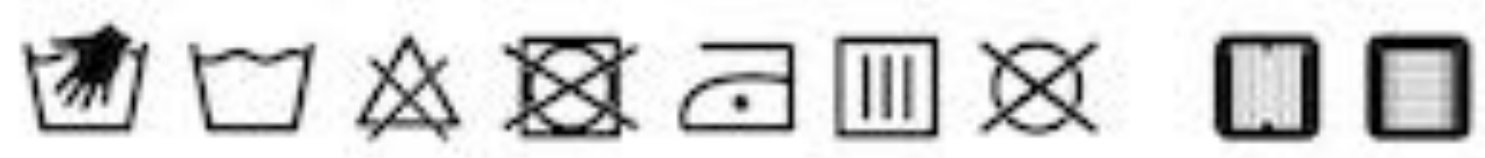




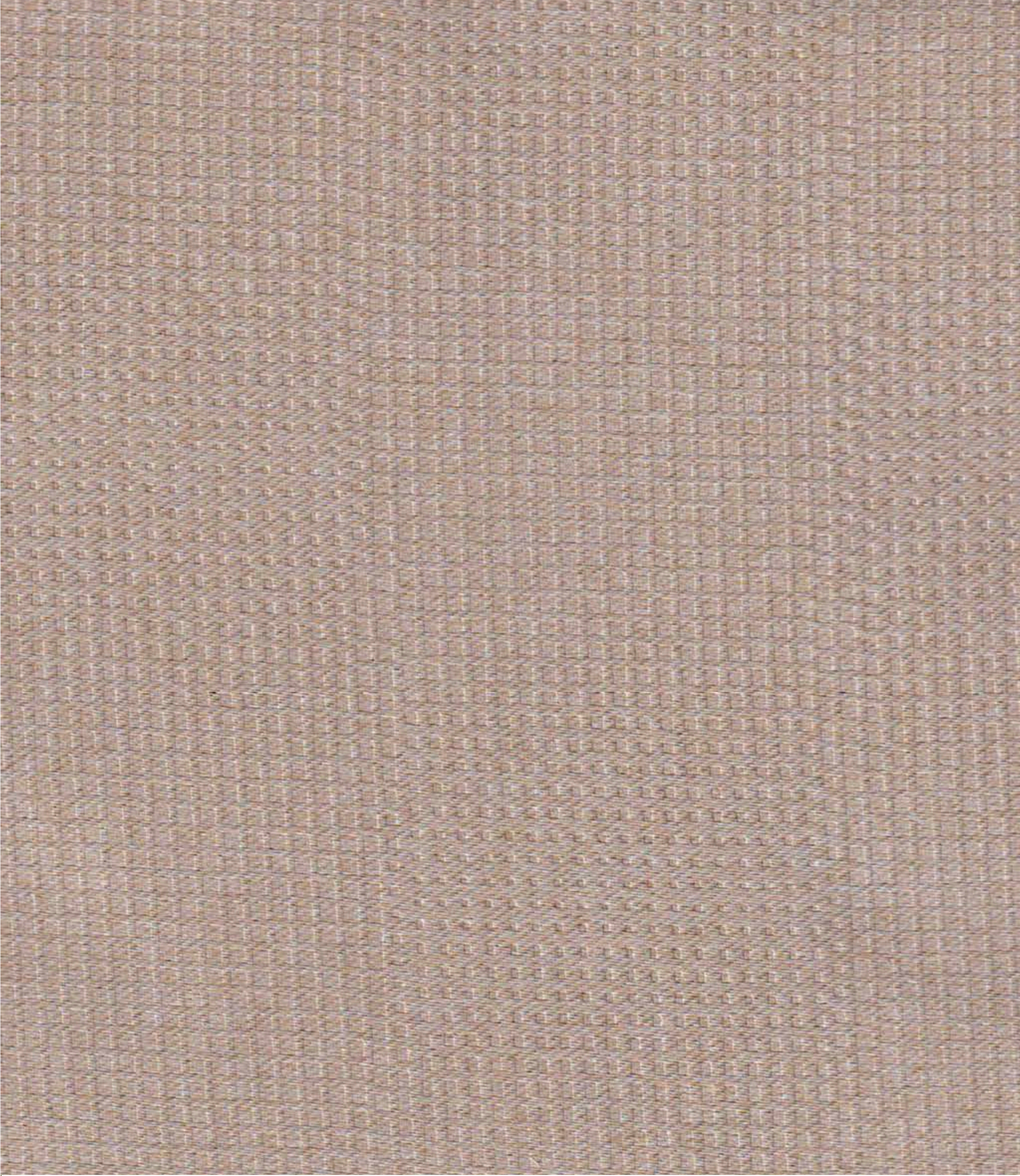
### Hallway ISSAC 002 PLATINUM

- Composition: 100% polyester
- Width: 320cm
- Martindale: 20,000 rubs
- Colour fastness to light passes AATCC 16
- Colour shades may slightly vary from dye-lot to dye-lot

**CODE GUIDE**  
**SUN OUT**







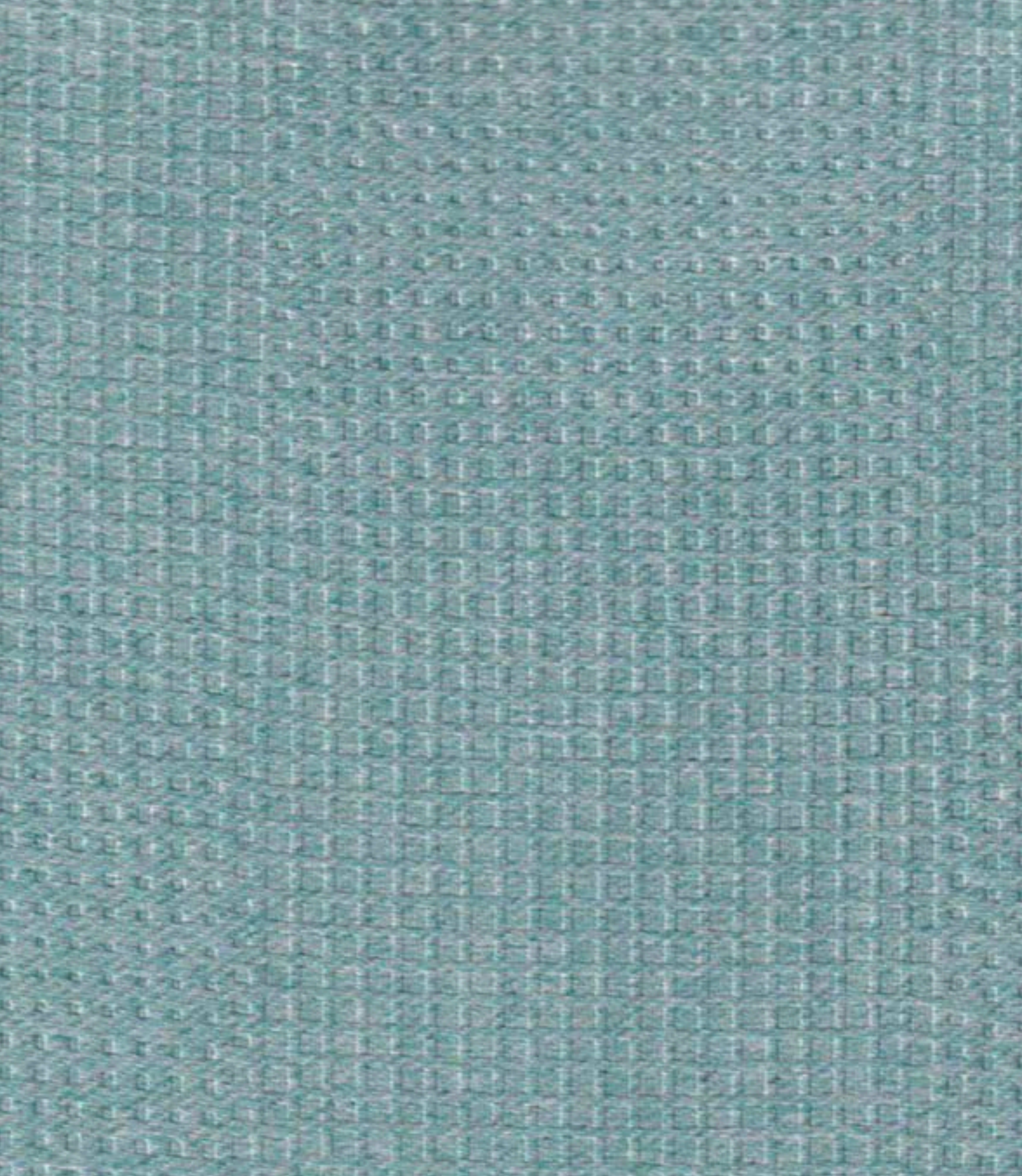
### Hallway ISSAC 003 BRASS

- Composition: 100% polyester
- Width: 320cm
- Martindale: 20,000 rubs
- Colour fastness to light passes AATCC 16
- Colour shades may slightly vary from dye-lot to dye-lot

**CODE GUIDE  
SUN OUT**







### Hallway ISSAC 004 TEAL

- Composition: 100% polyester
- Width: 320cm
- Martindale: 20,000 rubs
- Colour fastness to light passes AATCC 16
- Colour shades may slightly vary from dye-lot to dye-lot

CODE GUIDE  
SUN OUT



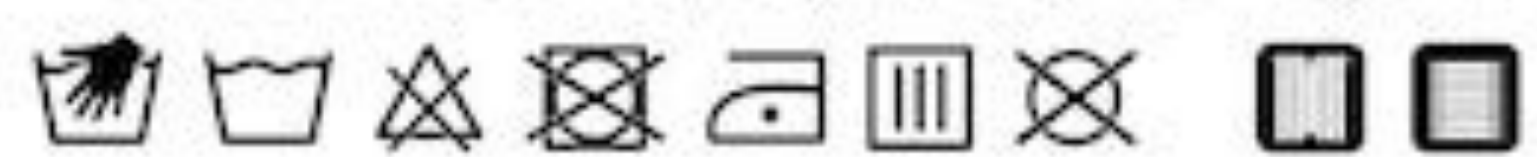




### Hallway ISSAC 005 SILICON

- Composition: 100% polyester
- Width: 320cm
- Martindale: 20,000 rubs
- Colour fastness to light passes AATCC 16
- Colour shades may slightly vary from dye-lot to dye-lot

**CODE GUIDE  
SUN OUT**



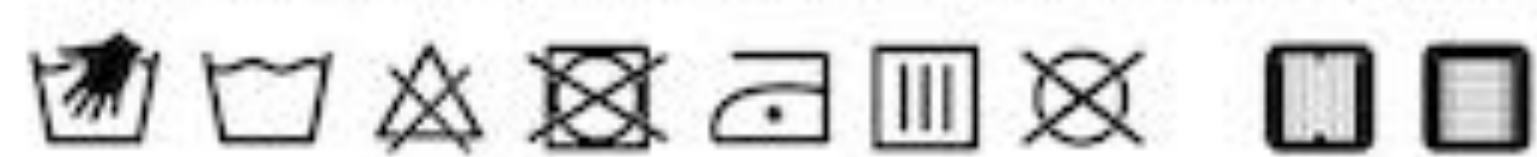




### Hallway ISSAC 006 NICKEL

- Composition: 100% polyester
- Width: 320cm
- Martindale: 20,000 rubs
- Colour fastness to light passes AATCC 16
- Colour shades may slightly vary from dye-lot to dye-lot

**CODE GUIDE  
SUN OUT**



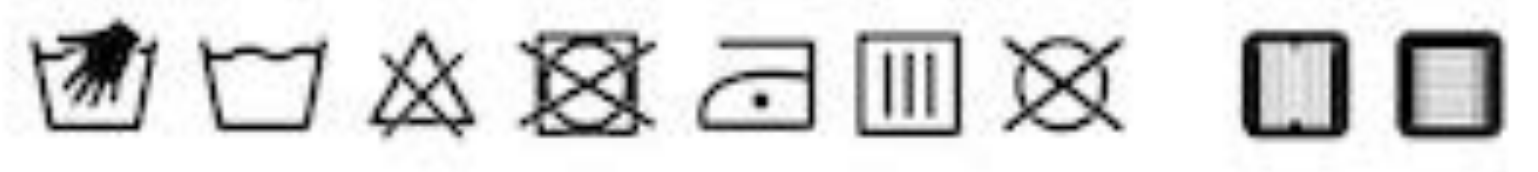




**Hallway ISSAC 007 GRAPHITE**

- Composition: 100% polyester
- Width: 320cm
- Martindale: 20,000 rubs
- Colour fastness to light passes AATCC 16
- Colour shades may slightly vary from dye-lot to dye-lot

**CODE GUIDE  
SUN OUT**







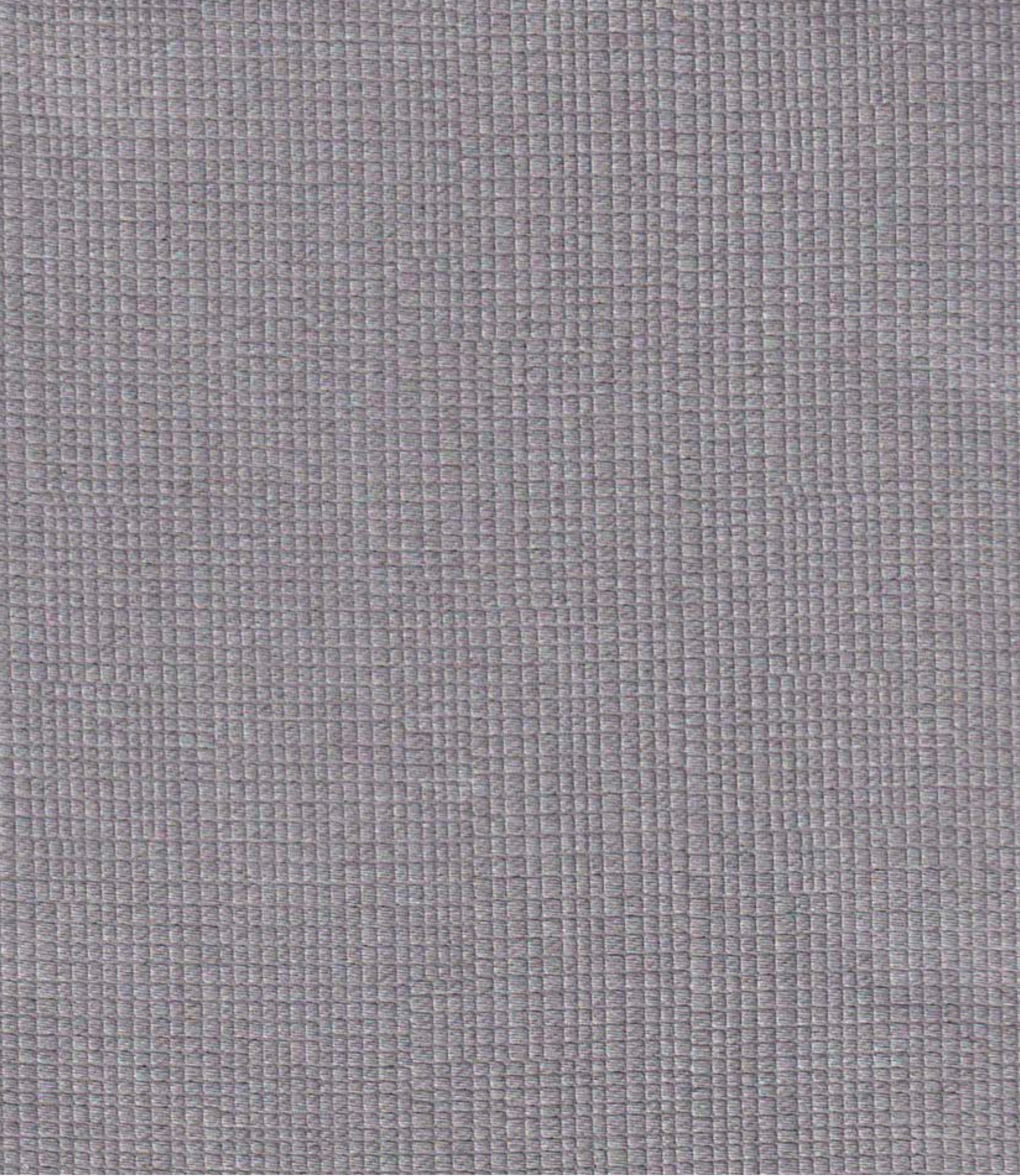
### Hallway ISSAC 008 COPPER

- Composition: 100% polyester
- Width: 320cm
- Martindale: 20,000 rubs
- Colour fastness to light passes AATCC 16
- Colour shades may slightly vary from dye-lot to dye-lot

**CODE GUIDE  
SUN OUT**







## Hallway LUCAS 001 IRON

- Composition: 100% polyester
- Width: 320cm
- Martindale: 20,000 rubs
- Colour fastness to light passes AATCC 16
- Colour shades may slightly vary from dye-lot to dye-lot

**CODE GUIDE**  
**SUN OUT**







### Hallway LUCAS 002 PLATINUM

- Composition: 100% polyester
- Width: 320cm
- Martindale: 20,000 rubs
- Colour fastness to light passes AATCC 16
- Colour shades may slightly vary from dye-lot to dye-lot

**CODE GUIDE  
SUN OUT**



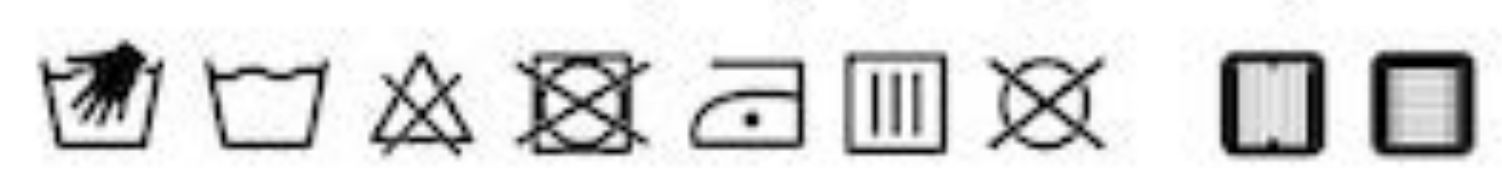




### Hallway LUCAS 003 BRASS

- Composition: 100% polyester
- Width: 320cm
- Martindale: 20,000 rubs
- Colour fastness to light passes AATCC 16
- Colour shades may slightly vary from dye-lot to dye-lot

**CODE GUIDE  
SUN OUT**



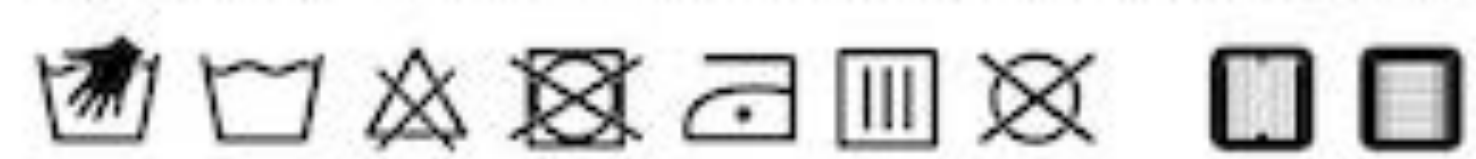




### Hallway LUCAS 004 TEAL

- Composition: 100% polyester
- Width: 320cm
- Martindale: 20,000 rubs
- Colour fastness to light passes AATCC 16
- Colour shades may slightly vary from dye-lot to dye-lot

**CODE GUIDE  
SUN OUT**







**Hallway LUCAS 005 SILICON**

- Composition: 100% polyester
- Width: 320cm
- Martindale: 20,000 rubs
- Colour fastness to light passes AATCC 16
- Colour shades may slightly vary from dye-lot to dye-lot

**CODE GUIDE  
SUN OUT**







## Hallway LUCAS 006 NICKEL

- Composition: 100% polyester
- Width: 320cm
- Martindale: 20,000 rubs
- Colour fastness to light passes AATCC 16
- Colour shades may slightly vary from dye-lot to dye-lot

CODE GUIDE  
SUN OUT







**Hallway LUCAS 007 GRAPHITE**

- Composition: 100% polyester
- Width: 320cm
- Martindale: 20,000 rubs
- Colour fastness to light passes AATCC 16
- Colour shades may slightly vary from dye-lot to dye-lot

**CODE GUIDE  
SUN OUT**







## Hallway LUCAS 008 COPPER

- Composition: 100% polyester
- Width: 320cm
- Martindale: 20,000 rubs
- Colour fastness to light passes AATCC 16
- Colour shades may slightly vary from dye-lot to dye-lot

**CODE GUIDE  
SUN OUT**

