



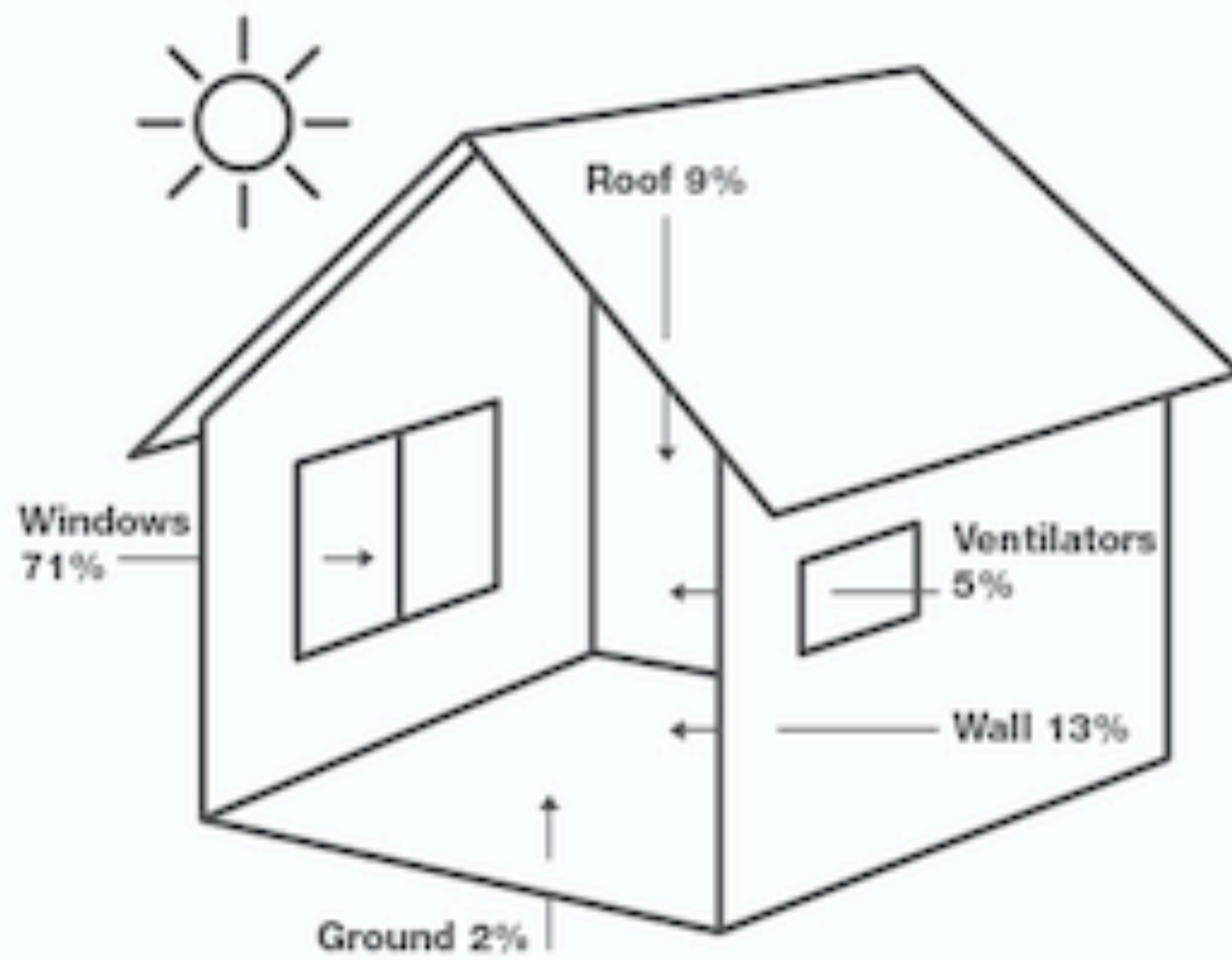
by AKEMIUCHI

IMPRINT

IMPRINT  
HEAT  
RESISTANT

**Effective heat resistance to keep homes cooler for longer**

Vigorous sun exposure all year tend to cause some homes to struggle with excessive radiant heat. In addition, overly bright and heated homes may also result in constant disruption to daily comfort especially during sleep. To significantly increase home comfort and quality of living, a simple curtain that zones out excessive heat will do the trick. Keep homes cooler with the Imprint Heat Resistant Curtains as they effectively insulate your home from higher outdoor temperature while simultaneously blocking sunlight from entering home spaces.



**Where does heat in your home enter from?**

As homes are exposed to sunlight, heat can be transferred in through many ways. Prominently, windows contribute the biggest part to heat accumulation in conventional homes.

With the Imprint Heat Resistant curtains in place, homes are kept in more comfortable temperatures as sunlight and excessive heat are blocked from entering home spaces.



**Tips**

Keep curtains closed before the heat of the day to minimise any heat transfer into home spaces.

<p><b>At a Glance</b></p>	<p>Good thermal insulation to keep room temperatures comfortable</p>	<p>Efficiently blocks all ambient light from the outside</p>	<p>Reduce energy consumption cost by up to 30%</p>	<p>Reflects UV rays from entering the indoors</p>
---------------------------	--	--	--	---

**ATTRIBUTES**



Energy Efficient



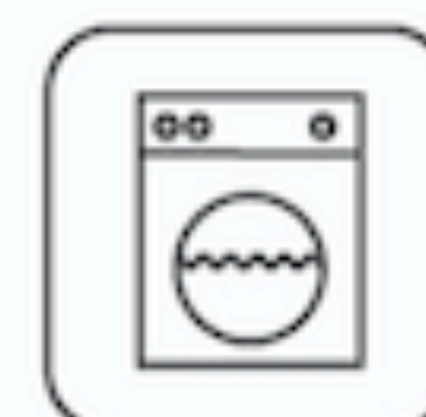
Thermal Insulation



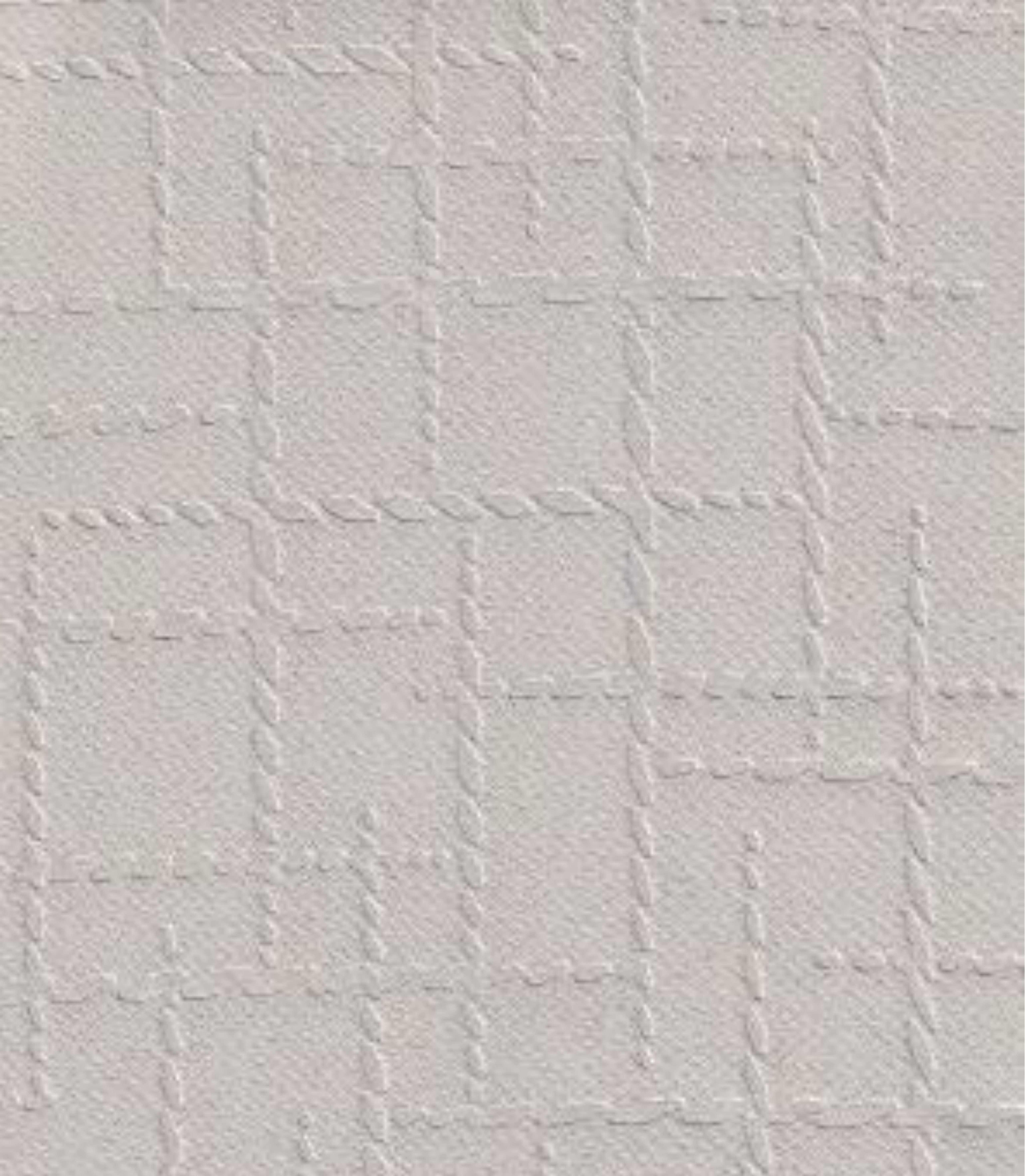
UV Protection



Sun Out



Machine Washable



### Imprint ATLAS 001 BREEZE CLAY

- Composition: 100% polyester
- Width: 320cm
- Martindale: 20,000 rubs
- Colour fastness to light passes AATCC 16
- Colour shades may slightly vary from dye-lot to dye-lot

**CODE GUIDE**  
**SUN OUT**





## Imprint ATLAS 002 PALE LANGUOR

- Composition: 100% polyester
- Width: 320cm
- Martindale: 20,000 rubs
- Colour fastness to light passes AATCC 16
- Colour shades may slightly vary from dye-lot to dye-lot

**CODE GUIDE  
SUN OUT**





**Imprint ATLAS 003 DUNE**

- Composition: 100% polyester
- Width: 320cm
- Martindale: 20,000 rubs
- Colour fastness to light passes AATCC 16
- Colour shades may slightly vary from dye-lot to dye-lot

**CODE GUIDE  
SUN OUT**





**Imprint ATLAS 004 YARWOOD LEATHER**

- Composition: 100% polyester
- Width: 320cm
- Martindale: 20,000 rubs
- Colour fastness to light passes AATCC 16
- Colour shades may slightly vary from dye-lot to dye-lot

**CODE GUIDE**  
**SUN OUT**

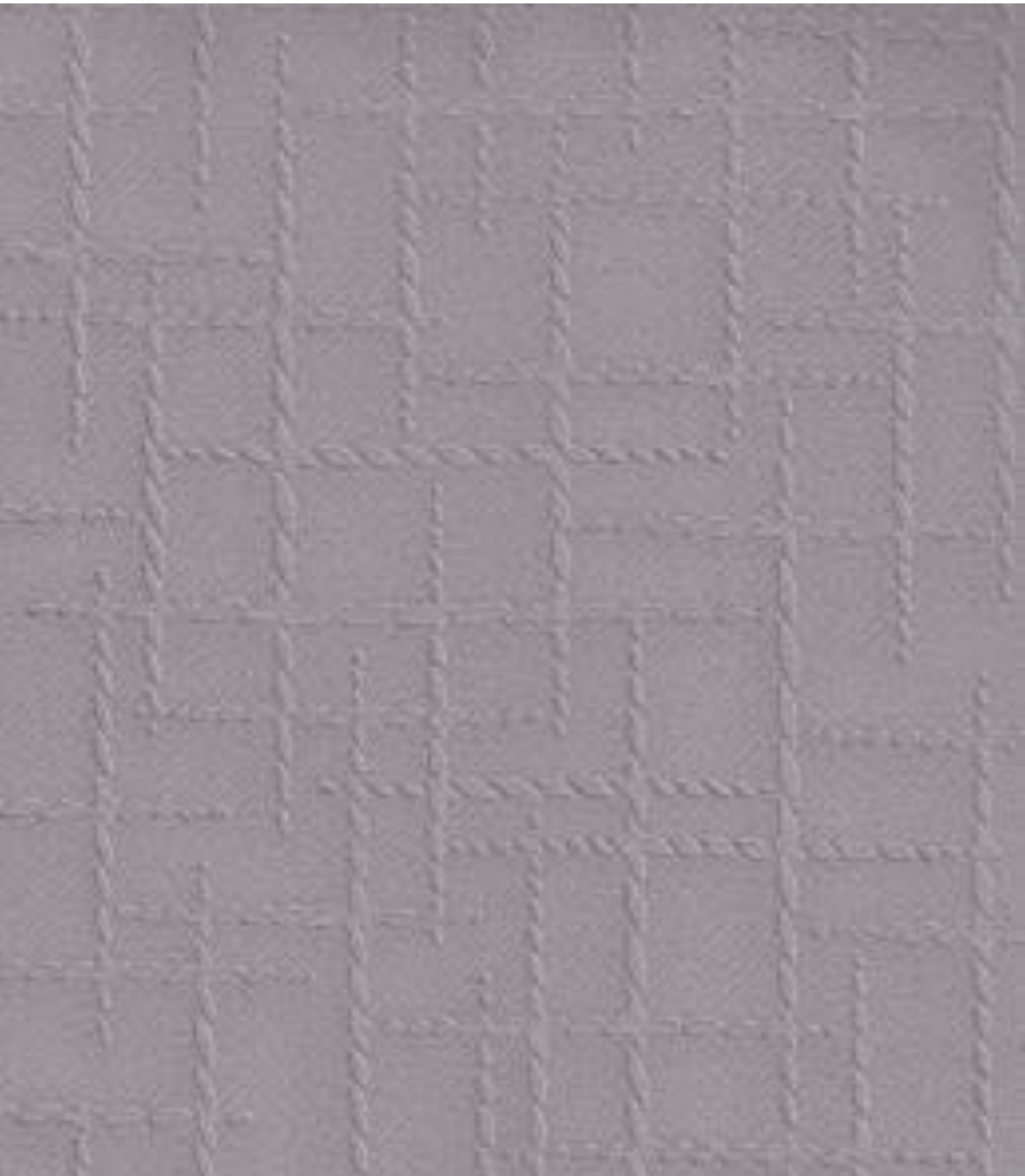


## Imprint ATLAS 005 ROCKS

- Composition: 100% polyester
- Width: 320cm
- Martindale: 20,000 rubs
- Colour fastness to light passes AATCC 16
- Colour shades may slightly vary from dye-lot to dye-lot

**CODE GUIDE  
SUN OUT**





### Imprint ATLAS 006 GREYHERB

- Composition: 100% polyester
- Width: 320cm
- Martindale: 20,000 rubs
- Colour fastness to light passes AATCC 16
- Colour shades may slightly vary from dye-lot to dye-lot

**CODE GUIDE**  
**SUN OUT**







### Imprint ATLAS 007 PEAK

- Composition: 100% polyester
- Width: 320cm
- Martindale: 20,000 rubs
- Colour fastness to light passes AATCC 16
- Colour shades may slightly vary from dye-lot to dye-lot

CODE GUIDE  
SUN OUT





**Imprint ATLAS 008 SARDIN GREY**

- Composition: 100% polyester
- Width: 320cm
- Martindale: 20,000 rubs
- Colour fastness to light passes AATCC 16
- Colour shades may slightly vary from dye-lot to dye-lot

**CODE GUIDE  
SUN OUT**





## Imprint GUEVARA 001 BUTTER CREAM

- Composition: 100% polyester
- Width: 320cm
- Martindale: 20,000 rubs
- Colour fastness to light passes AATCC 16
- Colour shades may slightly vary from dye-lot to dye-lot

CODE GUIDE  
SUN OUT





**Imprint GUEVARA 002 CLASSIC MAROON**

- Composition: 100% polyester
- Width: 320cm
- Martindale: 20,000 rubs
- Colour fastness to light passes AATCC 16
- Colour shades may slightly vary from dye-lot to dye-lot

**CODE GUIDE  
SUN OUT**





**Imprint GUEVARA 003 GOBLIN BLUE**

- Composition: 100% polyester
- Width: 320cm
- Martindale: 20,000 rubs
- Colour fastness to light passes AATCC 16
- Colour shades may slightly vary from dye-lot to dye-lot

**CODE GUIDE**  
**SUN OUT**



## Imprint GUEVARA 004 CLASSIC BLUE

- Composition: 100% polyester
- Width: 320cm
- Martindale: 20,000 rubs
- Colour fastness to light passes AATCC 16
- Colour shades may slightly vary from dye-lot to dye-lot

**CODE GUIDE  
SUN OUT**





**Imprint GUEVARA 005 CEMENT GREY**

- Composition: 100% polyester
- Width: 320cm
- Martindale: 20,000 rubs
- Colour fastness to light passes AATCC 16
- Colour shades may slightly vary from dye-lot to dye-lot

**CODE GUIDE  
SUN OUT**





**Imprint GUEVARA 006 TAUPE**

- Composition: 100% polyester
- Width: 320cm
- Martindale: 20,000 rubs
- Colour fastness to light passes AATCC 16
- Colour shades may slightly vary from dye-lot to dye-lot

**CODE GUIDE  
SUN OUT**







**Imprint GUEVARA 007 CHARCOAL GREY**

- Composition: 100% polyester
- Width: 320cm
- Martindale: 20,000 rubs
- Colour fastness to light passes AATCC 16
- Colour shades may slightly vary from dye-lot to dye-lot

**CODE GUIDE  
SUN OUT**



## Imprint GUEVARA 008 JET BLACK

- Composition: 100% polyester
- Width: 320cm
- Martindale: 20,000 rubs
- Colour fastness to light passes AATCC 16
- Colour shades may slightly vary from dye-lot to dye-lot

CODE GUIDE  
SUN OUT





## Imprint **BARRETT 001 REED CREAM**

- Composition: 100% polyester
- Width: 320cm
- Martindale: 20,000 rubs
- Colour fastness to light passes AATCC 16
- Colour shades may slightly vary from dye-lot to dye-lot

**CODE GUIDE  
SUN OUT**





**Imprint BARRETT 002 PIP**

- Composition: 100% polyester
- Width: 320cm
- Martindale: 20,000 rubs
- Colour fastness to light passes AATCC 16
- Colour shades may slightly vary from dye-lot to dye-lot

**CODE GUIDE  
SUN OUT**





**Imprint BARRETT 003 PEACH PUTT**

- Composition: 100% polyester
- Width: 320cm
- Martindale: 20,000 rubs
- Colour fastness to light passes AATCC 16
- Colour shades may slightly vary from dye-lot to dye-lot

**CODE GUIDE  
SUN OUT**





## Imprint **BARRETT 004 MACAROON PINK**

- Composition: 100% polyester
- Width: 320cm
- Martindale: 20,000 rubs
- Colour fastness to light passes AATCC 16
- Colour shades may slightly vary from dye-lot to dye-lot

**CODE GUIDE**  
**SUN OUT**





**Imprint BARRETT 005 PALE AQUA**

- Composition: 100% polyester
- Width: 320cm
- Martindale: 20,000 rubs
- Colour fastness to light passes AATCC 16
- Colour shades may slightly vary from dye-lot to dye-lot

**CODE GUIDE  
SUN OUT**





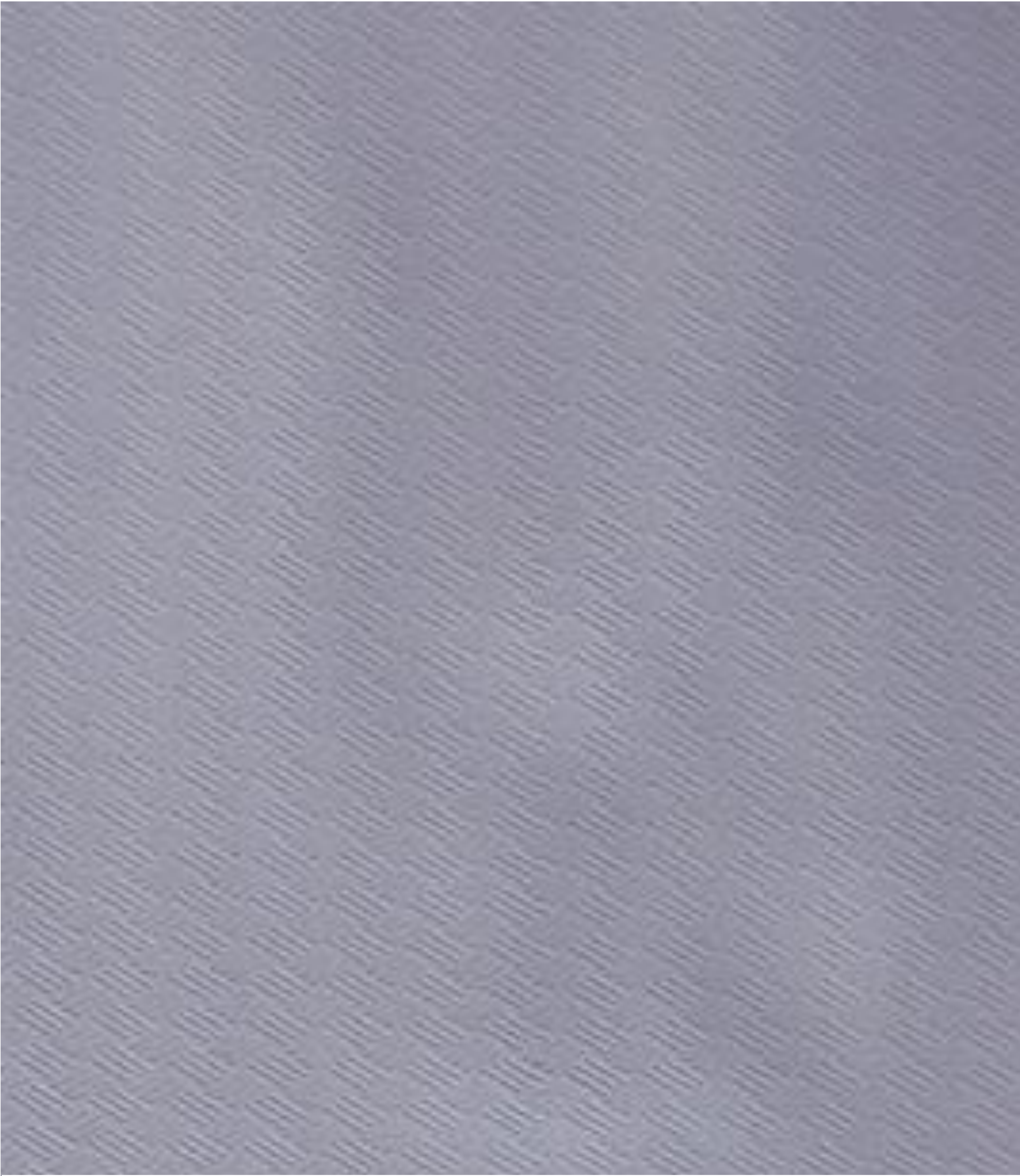
**Imprint BARRETT 006 CAPE**

- Composition: 100% polyester
- Width: 320cm
- Martindale: 20,000 rubs
- Colour fastness to light passes AATCC 16
- Colour shades may slightly vary from dye-lot to dye-lot

**CODE GUIDE  
SUN OUT**







### Imprint **BARRETT 007 STONE**

- Composition: 100% polyester
- Width: 320cm
- Martindale: 20,000 rubs
- Colour fastness to light passes AATCC 16
- Colour shades may slightly vary from dye-lot to dye-lot

**CODE GUIDE  
SUN OUT**





**Imprint BARRETT 008 WALL**

- Composition: 100% polyester
- Width: 320cm
- Martindale: 20,000 rubs
- Colour fastness to light passes AATCC 16
- Colour shades may slightly vary from dye-lot to dye-lot

**CODE GUIDE  
SUN OUT**

